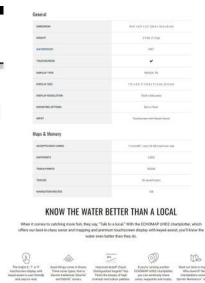
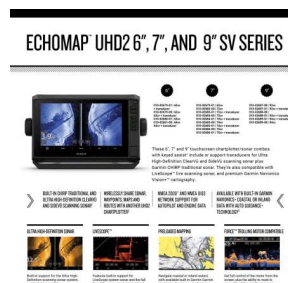




## Yellowfin 6500 Folding Hard Top + Yamaha F150hp 4-Stroke - Pack 1 for sale online prices

\$103,390



### Description

#### PACK 1 INCLUSIONS:

- 

YELLOWFIN 6500 FOLDING HARD TOP - Fully painted

- 

YELLOWFIN HYDRAULIC BRAKED TANDEM TRAILER 2600ATM - 5 Alloy Cross Members, 50mm Coupling Braked (2Tonne), 7 Pin Plug, Actuator, Axle 45 Square, Clearance Lights, Draw Bar, Easy Loader Cradle, Forward Facing White Light, Jockey Wheel Swing Up, LED Lights, Plate Flipper - Short, Rolled Frame Alloy I-Beam, Winch 10:5:1

- 

SPARE WHEEL AND CARRIER - Includes matching wheel and tyre

- 

YAMAHA F150HP 4-STROKE - Forward Control with 703 Control Box, 2x Multifunctional Digital Gauges, Integrated Hydraulic Steering(IHS) for Mech Helm, Power Trim & Tilt with integrated limiter, Electric Start, SDS S/S Prop, Fuel Filter, Workshop fitted & Tested, Bolted on with PVC backing board, Loom & Control Cables, Dealer Delivery & Training

- 

MOTOR SUPPORT BLOCK - Prevents the motor from returning to the vertical position and helps prevents excessive loads on the tilt assembly

- 

GARMIN UHD2 95SV CHARTPLOTTER/SOUNDER COMBO - Garmin Navionics+ Australia & New Zealand Mapping preloaded, Bright sunlight-readable 9" keyed display, High-contrast vivid colour palettes, Traditional CHIRP and ClearVü scanning sonars, Garmin GT56 transducer fitted

- 

TRANSDUCER UPGRADE TO GT56UHD - Ultra High-Definition ClearVü and SideVü scanning sonars, high wide CHIRP traditional sonar and more

- 

GME GX750B VHF MARINE RADIO - Compact modular design, Large LCD with brightness & colour options, IPX7 ingress protection, Waterproof speaker microphone, 25/1 Watt Switchable Power, Dual & Triple Watch with Programmable Priority Channel, Two Working Channel Memories

- 

MARINE BATTERY & ISOLATION SWITCH - Australian made marine rated battery with warranty

- 

12-MONTHS QLD REGISTRATION FOR BOAT AND TRAILER

- 

FULL IN-SHORE SAFETY GEAR(4.8m+) - 70L Water, proof bag, 4x PFD(type 1) life jackets, LED torch, V-Sheet, Signal Mirror, 2x Telescopic Paddles, Anchor Kit with Rope & Chain, Inshore Flares(2x red, 2x orange), 1kg Fire Extinguisher, EPIRB

#### SPECIFICATION

Length Maximum: 6.55m

Beam: 2.4

#### Disclaimer

Our company offers the details of this vessel in good faith but cannot guarantee or warrant the accuracy of this information nor warrant the condition of the vessel. A buyer should instruct his agents and/or surveyors to investigate such details buyer desires validated. This vessel is offered subject to prior sale, price change or withdrawal without notice.

Max. HP: 200hp

Number of People: 6

Fuel Tank: 260 L

Boat Weight: 1017kg

Motor Weight: 255kg

Transom Shaft Length: XLS

Top Sides: 4mm

Bottom Sides: 6mm

Transom Material: 6mm

Depth: 1.25mFEATURES

Accessory kit

Carpet: Cabin Storage & Lids

Drink Holder Cups

Live Bait Tank

Maxi Bracket

Outrigger Mounting Plates

Rod Holders (6)

Scuppers

Twin Battery Box & Switch

X-Bollard

Self Drain Floor

Self Drain Floor Treadplate

Anchorwell

Cabin Footrest

Folding Hard Top

Fully Weld Gunnels & Side Decks

S.S. Bowroller

Side Pockets

Transducer Brackets x 2

Trim Tabs

Welded Gunnels and Top Decks

Unpainted Gunnels & Transom

Rails: Bowrails

Rails: Cabin Grabrail

Rails: Side

Rails: Transom

Seats: Helm Box with Hatch

Seats: Nav. Box with Hatch

Seats: Sea Sport

Hydraulic Steering

Transom DoorOPTIONS

Covers: Front Clears

Covers: Side Clears

---

Disclaimer

Our company offers the details of this vessel in good faith but cannot guarantee or warrant the accuracy of this information nor warrant the condition of the vessel. A buyer should instruct his agents and/or surveyors to investigate such details buyer desires validated. This vessel is offered subject to prior sale, price change or withdrawal without notice.

Bait & Fishing Station

Burley Bucket

Carpet: Cabin Lining

Cutting Board Transom

Deck Wash

Dive Ladder

Drum Winch

Large Bait & Fishing Station

LED Lights

Marine Radio

S.S. Sinker Cups

Sound System & Speakers

Hand Wash

Trim Tabs (Zipwake)

Painted Two Tone

Platinum Pack

Seats: Cabin Backrest

Seats: Cabin Cushions

Seats: Cabin Insert Cushion

Seats: Folding Rear Lounge 3/4

Seats: Suspension

Vinyl Wrap

Please note that some of the images may include options that are not included in this package. Please refer to the package listings. Additionally we do not stock all packages that are advertised on line, these packages are to give you an idea of price and inclusions. Please allow us the opportunity to quote you on your requirements.

We sell the full range of: Quintrex, Yellowfin Plate boats, Haines Hunter, Evolution Boats, Polycraft, Yamaha Outboards, MOVE boat trailers, and much more. We can assist with Finance & Insurance to approved applicants. Looking to trade-in or sell your boat? Speak with one of our boat valuation experts!

BRISBANE YAMAHA - (07) 3888 1727, Bruce Highway, Burpengary QLD

Boat Brand	Model	Stock Number
YELLOWFIN	6500 FOLDING HT	YF6500FHTP1-1024
Length	Year	Condition
6.55 Metres	2025	New
State	Suburb	Boat Link
Queensland	Burpengary East	

Disclaimer

Our company offers the details of this vessel in good faith but cannot guarantee or warrant the accuracy of this information nor warrant the condition of the vessel. A buyer should instruct his agents and/or surveyors to investigate such details buyer desires validated. This vessel is offered subject to prior sale, price change or withdrawal without notice.