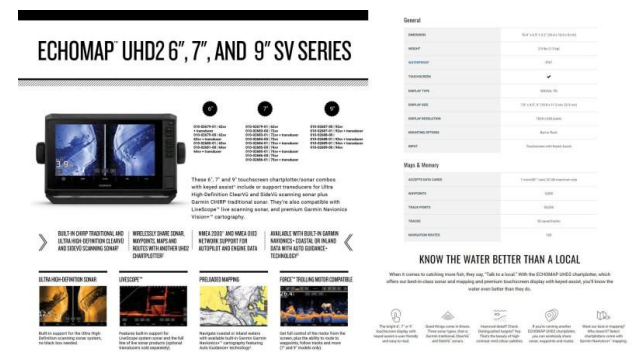




## Quintrex 520 Top Ender + Yamaha F90hp 4-Stroke - Pack 1 for sale online prices

\$59,890



### Description

The Quintrex 520 Top Ender package is an excellent choice for both recreational boating and fishing enthusiasts. Painted in sleek white, the 520 Top Ender combines durability and performance. It comes equipped with a Quintrex braked trailer featuring alloy wheels, a 50mm coupling braked system, and adjustable keel rollers that ensure safe and easy transport. The trailer's rugged design includes four alloy cross members, LED lights, and a swing-up jockey wheel for convenience.

Powering this versatile boat is a Yamaha F90HP 4-stroke engine, known for its reliability and efficiency. This engine includes forward controls, a 703 control box, and two multifunctional digital gauges for streamlined handling. The electric start and power trim & tilt system offer effortless control, while the SDS alloy prop ensures smooth performance. The engine is workshop-fitted and tested, ensuring you're ready to hit the water without any hassle.

To enhance your boating experience, the package includes a Garmin UHD2 75SV Chartplotter/Sounder Combo. This device comes with preloaded Australia and New Zealand mapping and a sunlight-readable display, perfect for navigating with ease. The combination of CHIRP and ClearVü scanning sonars offers clear, high-contrast images, making it an ideal tool for fishing enthusiasts. Additionally, the package features an Australian-made marine battery with an isolation switch, ensuring reliable power on your adventures.

**PACK 1 INCLUSIONS:**

- 

QUINTREX 520 TOP ENDER - Painted in white

- 

QUINTREX BRAKED TRAILER 1400ATM - 13 Inch Alloy Wheels, 13 Inch Tyres, 4 Alloy Cross Members, 50mm Coupling Braked (2Tonne), 7 Pin Plug, Adjustable Keel Rollers (Dual), Adjustable Keel Rollers (Single), Adjustable Long Skids, Axle 45 Square, Clearance Lights, Disc Brakes, Draw Bar, Forward Facing White Light, Jockey Wheel Swing Up, LED Lights, Rolled Frame Alloy I-Beam, Winch 5:1

- 

YAMAHA F90HP 4-STROKE - Forward Control with 703 Control Box, 2x Multifunctional Digital Gauges, Power Trim & Tilt, Electric Start, SDS Alloy Prop, Fuel Filter, Workshop fitted & Tested, Bolted on with PVC backing board, Loom & Control Cables, Dealer Delivery & Training

- 

GARMIN UHD2 75SV CHARTPLOTTER/SOUNDER COMBO - Garmin Navionics+ Australia & New Zealand Mapping preloaded, Bright sunlight-readable 7" keyed display, High-contrast vivid colour palettes, Traditional CHIRP and ClearVü scanning sonars, Garmin GT54 transducer fitted

- 

MARINE BATTERY & ISOLATION SWITCH - Australian made marine rated battery with warranty

- 

CURRENT QUINTREX DECALS/STICKERS - Images may show out dated stickers/decals

- 

### Disclaimer

Our company offers the details of this vessel in good faith but cannot guarantee or warrant the accuracy of this information nor warrant the condition of the vessel. A buyer should instruct his agents and/or surveyors to investigate such details buyer desires validated. This vessel is offered subject to prior sale, price change or withdrawal without notice.

---

12-MONTHS QLD REGISTRATION FOR BOAT AND TRAILER

•

FULL IN-SHORE SAFETY GEAR(4.8m+) - 70L Water, proof bag, 4x PFD(type 1) life jackets, LED torch, V-Sheet, Signal Mirror, 2x Telescopic Paddles, Anchor Kit with Rope & Chain, Inshore Flares(2x red, 2x orange), 1kg Fire Extinguisher

SPECIFICATIONS

Hull Length:5.49m

Beam:2.2

Max. HP:115hp

Number of People:5

Fuel Tank:Under Floor 95L

Boat Weight:513kg

Motor Weight:195kg

Transom Shaft Length:LS

Top Sides:3mm

Bottom Sides:4mm

Transom Material:4mmFEATURES

Casting Platform Raised

Helm: Side Console & Hydraulic Steering

Drink Holder Cups

Glove Box

Live Bait Tank

Pole Mount Insert

Rear Ladder

Rod Holders (4)

Scuppers

Underfloor Storage

Anchorwell

Cleat On Front Deck

Side Decks Extruded

Side Pockets

Transducer Brackets x 2

Welded Gunnels and Top Decks

Painted Hull

Rail: Transom Grabrail

Rails

Rails: Console Grabrail

Rails: Side

Seat Positions (4)

Seats: Pedestal

---

Disclaimer

Our company offers the details of this vessel in good faith but cannot guarantee or warrant the accuracy of this information nor warrant the condition of the vessel. A buyer should instruct his agents and/or surveyors to investigate such details buyer desires validated. This vessel is offered subject to prior sale, price change or withdrawal without notice.

---

Helm: Hydraulic SteeringOPTIONS

Covers: Bimini & Envelope

Covers: Bimini & Envelope NT

Covers: Bimini Extension - Large

Covers: Bimini Extension - Small

Casting Platform & Storage Bin

Aerial on deck

Burley Bucket

Cockpit Lights (2)

Cutting Board for Ski Pole

Deck Wash

Drum Winch

Fusion Stereo & Speakers

Marine Radio

Rod Holders (2)

Seat Spiggot

Ski Hooks

Ski Pole

Twin Battery Box & Switch

Bow Mount Thruster Plate

Deluxe Rod Locker

Quintrex Top Ender Captain's Bundle

Quintrex Top Ender Fishing Bundle

Painted Two Tone

Seat Pedestal

Seat: Lean

Seats: Angler Sport

Seats: Bass Sport

Seats: Lean Seat

Helm: Hydraulic Tilt Steering

Transom Door

Vinyl Wrap

Please note that some of the images may include options that are not included in this package. Please refer to the package listings. Additionally we do not stock all packages that are advertised on line, these packages are to give you an idea of price and inclusions. Please allow us the opportunity to quote you on your requirements.

We sell the full range of: Quintrex, Yellowfin Plate boats, Haines Hunter, Evolution Boats, Polycraft, Yamaha Outboards, MOVE boat trailers, and much more. We can assist with Finance & Insurance to approved applicants. Looking to trade-in or sell your boat? Speak with one of our boat valuation experts!

BRISBANE YAMAHA - (07) 3888 1727, Bruce Highway, Burpengary QLD

---

Boat Brand	Model	Stock Number
------------	-------	--------------

---

Disclaimer  
Our company offers the details of this vessel in good faith but cannot guarantee or warrant the accuracy of this information nor warrant the condition of the vessel. A buyer should instruct his agents and/or surveyors to investigate such details buyer desires validated. This vessel is offered subject to prior sale, price change or withdrawal without notice.

Quintrex	520 TOP ENDER	Q520TEP1-0924
Length	Year	Condition
5.49 Metres	2025	New
State	Suburb	Boat Link
Queensland	Burpengary East	

---

**Disclaimer**

Our company offers the details of this vessel in good faith but cannot guarantee or warrant the accuracy of this information nor warrant the condition of the vessel. A buyer should instruct his agents and/or surveyors to investigate such details buyer desires validated. This vessel is offered subject to prior sale, price change or withdrawal without notice.