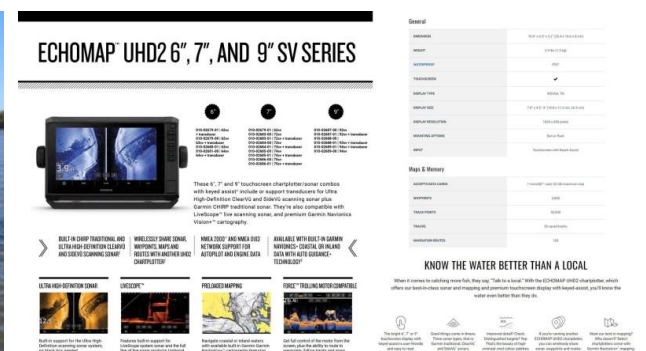




Quintrex 510 Frontier SC + Yamaha F115hp 4-Stroke - PACK 2 FOR SALE

68,900



Description

Set up as a Pack 2, the Quintrex Frontier is a smart Aussie fishing rig built for versatility, stability, and easy days on the water. The Apex Hull gives a solid, dry ride with great handling, while the side console layout keeps the deck open and practical for casting, fishing, or moving around with gear.

Powered by a reliable Yamaha four stroke, it delivers smooth, quiet performance with easy control and solid fuel efficiency. The Quintrex trailer setup makes towing and launching simple, while dual batteries keep everything running without stress. With Garmin electronics, bimini and clears for weather protection, rod storage, live bait tank, deck wash, and full safety gear included, this Pack 2 is a ready-to-go fishing machine for Aussie conditions. **PACK 2 INCLUSIONS:**

- QUINTREX 510 FRONTIER SC - PAINTED IN WHITE WITH FACTORY FITTED INCLUSIONS - Carpeted/plywood casting platform, side console with hydraulic steering, anchorwell, 2 cockpit lights, live bait tank, marine radio, maxi bracket, pole mount insert, rear ladder, 4 rod holders, scuppers, Apex hull, bow mount thruster plate, cleat on transom corners, raised side decks, side pockets, 2 transducer brackets, welded gunnels and top decks, painted hull, console grabrail, side rails, seatread kit, 4 seat positions, Bass Sport seats, 3 pedestal seats.
- QUINTREX BRAKED TRAILER 1298ATM - 13 Inch Alloy Wheels, 13 Inch Tyres, 4 Alloy Cross Members, 50mm Coupling Braked (2Tonne), 7 Pin Plug, Adjustable Keel Rollers (Dual), Adjustable Keel Rollers (Single), Adjustable Long Skids, Axle 45 Square, Clearance Lights, Disc Brakes, Draw Bar, Flippers (4), Forward Facing White Light, Jockey Wheel Swing Up, LED Lights, Loader Cradle, Motor Support, Rolled Frame Alloy I-Beam, Winch 5:1
- YAMAHA F115HP 4-STROKE - Forward Control with 703 Control Box, 2x Multifunctional LAN Digital Gauges, Power Trim & Tilt, Electric Start, SDS Alloy Prop, Fuel Filter, Workshop fitted & Tested, Bolted on with PVC backing board, Loom & Control Cables, Dealer Delivery & Training
- YAMAHA TRIM LIMIT SWITCH - Prevents the motor from trimming too far back and potentially making contact with parts of the boat
- GARMIN UHD2 75SV CHARTPLOTTER/SOUNDER COMBO - Garmin Navionics+ Australia & New Zealand Mapping preloaded, Bright sunlight-readable 7" keyed display, High-contrast vivid colour palettes, Traditional CHIRP, ClearVü and SideVü scanning sonars, Garmin transducer fitted
- MARINE BATTERY & ISOLATION SWITCH - Australian made marine rated battery with warranty
- BIMINI AND ENVELOPE - Provides shade and shelter, can be folded together and safely covered with the envelope
- TRANSOM DOOR
- CONSOLE 5 ROD STORAGE
- DECK WASH
- MEGA CHOPPER CUTTING BOARD

Disclaimer

Our company offers the details of this vessel in good faith but cannot guarantee or warrant the accuracy of this information nor warrant the condition of the vessel. A buyer should instruct his agents and/or surveyors to investigate such details buyer desires validated. This vessel is offered subject to prior sale, price change or withdrawal without notice.

- CATCH AND RELEASE BRACKET - Easy drive-on single-person boat hookup at the boat ramp

- SPARE WHEEL AND CARRIER - Includes matching wheel and tyre

- 12-MONTHS QLD REGISTRATION FOR BOAT AND TRAILER

- FULL IN-SHORE SAFETY GEAR (4.8m+) - 70L Water, proof bag, 4x PFD (type 1) life jackets, LED torch, V-Sheet, Signal Mirror, 2x Telescopic Paddles, Anchor Kit with Rope & Chain, Inshore Flares (2x red, 2x orange), 1kg Fire Extinguisher

Hull Length:5.08m

Beam:2.27

Max. HP:115hp

Number of People:5

Fuel Tank:Under Floor 80L

Boat Weight:572kg

Motor Weight:195kg

Transom Shaft Length:LS

Top Sides:3mm

Bottom Sides:4mm

Transom Material:4.00mm

STANDARD FEATURES:
 Carpeted plywood casting platform, Helm: Side Console & Hydraulic Steering, Anchorwell, Cockpit Lights (2), Live Bait Tank, Marine Radio, Maxi Bracket, Pole Mount Insert, Rear Ladder, Rod Holders (4), Scuppers, Apex Hull, Bow Mount Thruster Plate, Cleat on Transom Corners, Raised Side Decks, Side Pockets, Transducer Brackets x 2, Welded Gunnel and Top Decks, Painted Hull, Rails: Console Grabrail, Rails: Side, Seatread Kit, Seat Positions (4), Seats: Bass Sport, Pedestal Seats (3), Helm: Hydraulic Steering

AVAILABLE OPTIONS:
 Covers: Bimini & Envelope, Covers: Bimini & Envelope NT, Covers: Bimini Extension - Large, Covers: Bimini Extension - Small, Helm: Side Console (Navigator), Burley Bucket, Cigarette Lighter Outlet, Cutting Board for Ski Pole, Deck Wash, Drink Holder Cups, Drum Winch, Mega Cutting Board, Quintrex Ice Box 22L, Ski Pole, Twin Battery Box & Switch, Deluxe Rod Locker, Quintrex Frontier Captain's Pack, Quintrex Frontier Fishing Pack, Painted Two Tone, Seat Pedestal, Seat: Lean, Seats: Fish Sport, Lean Seat, Seats: Maritime Sport, Helm: Hydraulic Tilt Steering, Transom Door, Vinyl Wrap

Please note that some images may display optional extras that are not included in this package; please refer to the package listings for full details. Additionally, not all packages advertised online are held in stock, as they are intended to provide a guide on pricing and inclusions. At BY, we take the time to understand your needs, offering honest advice and expert knowledge to ensure you receive the right boat, set up to suit your requirements—because to us, it's not just about the sale. We can also assist with finance and insurance (to approved applicants), and if you're looking to trade or sell your boat, our experienced team can provide a professional, obligation-free valuation.

BRISBANE YAMAHA - (07) 3888 1727, Bruce Highway, Burpengary QLD

Boat Brand	Model	Stock Number
Quintrex	510 Frontier SC	Q510FP2-0925
Length	Year	Condition
5.08 Metres	2026	New
State	Suburb	Boat Link
Queensland	Burpengary East	

Disclaimer

Our company offers the details of this vessel in good faith but cannot guarantee or warrant the accuracy of this information nor warrant the condition of the vessel. A buyer should instruct his agents and/or surveyors to investigate such details buyer desires validated. This vessel is offered subject to prior sale, price change or withdrawal without notice.