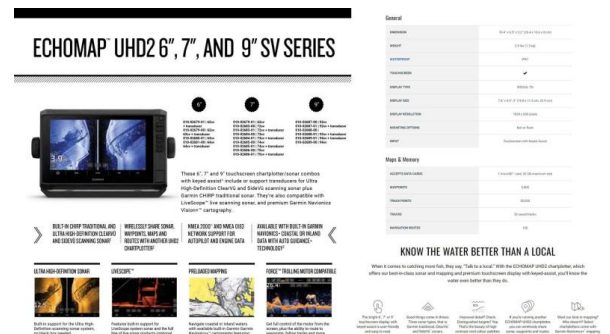




Quintrex 500 Fishabout + Yamaha F90HP 4-Stroke - Pack 3 for sale online prices

\$61,890



Description

The Quintrex 500 Fishabout, featuring a striking 2-tone painted finish with stripes and decals, is built for those who seek both style and substance. This versatile runabout provides an ideal blend of fishing and leisure capabilities, making it perfect for family outings or solo fishing adventures. Its robust design includes a painted hull for durability and visual appeal, while the windscreen and transom door upgrade enhance both safety and ease of access.

Paired with a Quintrex braked trailer rated at 1298 ATM, this package ensures smooth and secure transport. The trailer features 13-inch alloy wheels and tires, disc brakes, and multiple adjustable keel rollers to cater to varying boat weights and hull shapes. The included spare wheel and carrier match the trailer specifications, ensuring preparedness for any road situation. The swing-up jockey wheel and forward-facing white light add convenience and safety during maneuvering.

Powering this package is the reliable Yamaha F90HP 4-stroke outboard, equipped with forward controls, electric start, and power trim and tilt. The engine is fitted with a Yamaha 703 control box and multifunctional digital gauges, delivering a responsive and user-friendly boating experience. Complementing this setup is the Garmin UHD2 75SV chartplotter/sounder combo, featuring a bright 9-inch display and preloaded Garmin Navionics+ mapping, perfect for both navigation and fishing.

The package is further enhanced with a Fusion RA70N sound system for top-notch audio, a GME GX750B VHF marine radio for communication, and a comprehensive bimini and envelope with front and side clears, providing excellent weather protection. The interior upgrades include deluxe seating, a folding rear lounge, cargo netting under the cockpit, and cockpit lighting, ensuring comfort and convenience. Upholstered side pockets and a windscreen grab rail offer additional storage and safety features, making the Quintrex 500 Fishabout a well-rounded and ready-to-go package.

- PACK 3 INCLUSIONS:
-

QUINTREX 500 FISHABOUT - Painted in 2-tones, stripes/decals

-

QUINTREX BRAKED TRAILER 1298ATM - 13 Inch Alloy Wheels, 13 Inch Tyres, 4 Alloy Cross Members, 50mm Coupling Braked (2Tonne), 7 Pin Plug, Adjustable Keel Rollers (Dual), Adjustable Keel Rollers (Single), Adjustable Long Skids, Axle 45 Square, Clearance Lights, Disc Brakes, Draw Bar, Flippers (4), Forward Facing White Light, Jockey Wheel Swing Up, LED Lights, Loader Cradle, Motor Support, Rolled Frame Alloy I-Beam, Winch 5:1

-

SPARE WHEEL AND CARRIER - Includes matching wheel and tyre

-

YAMAHA F90HP 4-STROKE - Forward Control with 703 Control Box, 2x Multifunctional Digital Gauges, Power Trim & Tilt, Electric Start, SDS Alloy Prop, Fuel Filter, Workshop fitted & Tested, Bolted on with PVC backing board, Loom & Control Cables, Dealer Delivery & Training

-

MOTOR SUPPORT BLOCK - Prevents the motor from returning to the vertical position and helps prevent excessive loads on the tilt assembly

-

GARMIN UHD2 75SV CHARTPLOTTER/SOUNDER COMBO - Garmin Navionics+ Australia & New Zealand Mapping preloaded, Bright sunlight-readable 9" keyed display, High-contrast vivid colour palettes, Traditional CHIRP and ClearVü scanning sonars, Garmin GT56 transducer fitted

-

FUSION RA70N SOUND SYSTEM + 2X SPEAKERS - Increased screen visibility, Built-in Class-AB amplifier for efficiency and reduced distortion, Compatible with your smart device via the Fusion Audio app, Quality marine grade sound system and speakers

-

GME GX750B VHF MARINE RADIO - Compact modular design, Large LCD with brightness & colour options, IPX7 ingress protection, Waterproof speaker microphone, 25/1 Watt Switchable Power, Dual & Triple Watch with Programmable Priority Channel, Two Working Channel Memories

-

MARINE BATTERY & ISOLATION SWITCH - Australian made marine rated battery with warranty

-

BIMINI AND ENVELOPE WITH FRONT & SIDE CLEARS - Provides shade and shelter, can be folded together and safely covered/protected with the envelope. The front & side clears provide decent protection from the elements without compromising on vision or adding to the overall weight of the boat

-

DRIVER & PASSENGER SEAT UPGRADE

-

DELUXE FOLDING REAR LOUNGE AND BACKREST

-

CARGO/LUGGAGE NETTING FITTED UNDER COCKPIT

-

COCKPIT LIGHTS UPGRADE

-

UPHOLSTERED SIDE POCKETS UPGRADE

-

WINDSCREEN GRAB RAIL UPGRADE

-

TRANSOM DOOR ADDED

-

ROD HOLDERS ADDED

-

12-MONTHS QLD REGISTRATION FOR BOAT AND TRAILER

-

FULL IN-SHORE SAFETY GEAR(4.8m+) - 70L Water, proof bag, 4x PFD(type 1) life jackets, LED torch, V-Sheet, Signal Mirror, 2x Telescopic Paddles, Anchor Kit with Rope & Chain, Inshore Flares(2x red, 2x orange), 1kg Fire Extinguisher

SPECIFICATIONS

Hull Length:5.31m

Beam:2.2

Max. HP:90hp

Number of People:5

Fuel Tank:Under Floor 80L

Boat Weight:548kg

Motor Weight:185kg

Transom Shaft Length:LS

Top Sides:3mm

Bottom Sides:4mm

Transom Material:4mmFEATURES

Glove Box

Pole Mount Insert

Disclaimer

Our company offers the details of this vessel in good faith but cannot guarantee or warrant the accuracy of this information nor warrant the condition of the vessel. A buyer should instruct his agents and/or surveyors to investigate such details buyer desires validated. This vessel is offered subject to prior sale, price change or withdrawal without notice.

Rear Ladder

Rod Holders (2)

Scuppers

Transom Pads

Underfloor Storage

Anchorwell

Cleat On Front Deck

Fully Weld Gunnels & Side Decks

Lean Through Dash

Side Decks Extruded

Side Pockets

Transducer Brackets x 2

Painted Hull

Rails

Windscreen

Seat Slider

Seats: Angler Sport

Seats: Folding Rear Lounge

Mechanical Tilt SteeringOPTIONS

Bimini

Covers: Bimini & Envelope

Covers: Bimini & Envelope NT

Covers: Storm Cover

Front Clears

Side Clears

Travel Cover

Burley Bucket

Cargo/Luggage Netting

Cockpit Lights (2)

Cutting Board for Ski Pole

Drum Winch

Live Bait Tank Back Deck

Marine Radio

Ski Hooks

Ski Pole

Sound System & Speakers

Twin Battery Box & Switch

Quintrex Fishabout Captain's Bundle

Quintrex Fishabout Comfort Bundle

Disclaimer

Our company offers the details of this vessel in good faith but cannot guarantee or warrant the accuracy of this information nor warrant the condition of the vessel. A buyer should instruct his agents and/or surveyors to investigate such details buyer desires validated. This vessel is offered subject to prior sale, price change or withdrawal without notice.

Quintrex Fishabout Fishing Bundle

Painted Two Tone

Windscreen Grab Handle

Deluxe Folding Rear Lounge & Backrest

Seats: Fish Sport

Seats: Maritime Sport

Upholstered Side Pockets

Helm: Hydraulic Steering

Helm: Hydraulic Tilt Steering

Transom Door

Vinyl Wrap

Please note that some of the images may include options that are not included in this package. Please refer to the package listings. Additionally we do not stock all packages that are advertised on line, these packages are to give you an idea of price and inclusions. Please allow us the opportunity to quote you on your requirements.

We sell the full range of: Quintrex, Yellowfin Plate boats, Haines Hunter, Evolution Boats, Polycraft, Yamaha Outboards, MOVE boat trailers, and much more. We can assist with Finance & Insurance to approved applicants. Looking to trade-in or sell your boat? Speak with one of our boat valuation experts!

BRISBANE YAMAHA - (07) 3888 1727, Bruce Highway, Burpengary QLD

Boat Brand	Model	Stock Number
Quintrex	500 FISHABOUT	Q500FAP3-0324
Length	Year	Condition
5.31 Metres	2024	New
State	Suburb	Boat Link
Queensland	Burpengary East	

Disclaimer

Our company offers the details of this vessel in good faith but cannot guarantee or warrant the accuracy of this information nor warrant the condition of the vessel. A buyer should instruct his agents and/or surveyors to investigate such details buyer desires validated. This vessel is offered subject to prior sale, price change or withdrawal without notice.