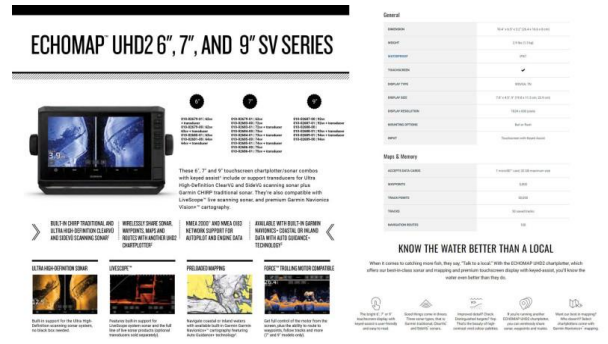




\$39,690



The Quintrex 450 Fishabout is designed for those who seek adventure on the water, whether it be fishing or leisure. Its sleek white paint complemented by vibrant stripes/decals not only turns heads but also embodies the spirit of aquatic exploration. Equipped with a Yamaha F60HP 4-stroke engine that features forward control with a 703 control box, electric start, and power trim & tilt, this boat promises effortless navigation and robust performance. The addition of an alloy prop and a meticulously fitted Garmin UHD2 75SV chartplotter/sounder combo, preloaded with Garmin Navionics+ for Australia & New Zealand, ensures you're always on course, making fishing expeditions both fruitful and enjoyable.

The Quintrex 450 Fishabout's journey to the water is supported by a robust Quintrex braked trailer, boasting 13-inch alloy wheels and tyres, LED and clearance lights, and a swing-up jockey wheel, highlighting the emphasis on safety and convenience. The trailer's adjustable keel rollers and axle are designed for easy handling and durability. Onboard, the bimini and envelope offer much-needed respite from the sun, while the marine battery with an isolation switch guarantees uninterrupted power. The thoughtful inclusion of cockpit lights and cargo/luggage netting under the cockpit enhances functionality, making every trip seamless and organized.

Designed with the angler in mind, this vessel not only promises exceptional stability and handling courtesy of its engineering but also offers a comfortable and equipped environment for fishing and leisure. From the powerful motor support block to the versatile Garmin chartplotter/sounder for navigating and fish finding, every element of the Quintrex 450 Fishabout is crafted to enhance your fishing expeditions. Whether you're chasing the catch of the day or simply soaking in the tranquility of the waters, this boat stands as your trusted companion, promising memorable experiences and adventures on the high seas.

- 

QUINTREX 450 FISHABOUT - Painted white, Stripes/decals

- 

QUINTREX BRAKED TRAILER 1098ATM - 13 Inch Alloy Wheels, 13 Inch Tyres, 4 Alloy Cross Members, 50mm Coupling Braked (2Tonne), 7 Pin Plug, Adjustable Keel Rollers, Adjustable Long Skids, Axle 45 Square, Clearance Lights, Disc Brakes, Draw Bar, Flippers (4), Forward Facing White Light, LED Lights, Motor Support, Rolled Frame Alloy I-Beam, Swing Up Jockey Wheel, Winch 5:1

- 

SPARE WHEEL AND CARRIER - Includes matching wheel and tyre

- 

YAMAHA F60HP 4-STROKE - Forward Control with 703 Control Box, 2x Multifunctional Digital Gauges, Power Trim & Tilt, Electric Start, Alloy Prop, Fuel Filter, Workshop fitted & Tested, Bolted on with PVC backing board, Loom & Control Cables, Dealer Delivery & Training

- 

MOTOR SUPPORT BLOCK - Prevents the motor from returning to the vertical position and helps prevent excessive loads on the tilt assembly

- 

GARMIN UHD2 75SV CHARTPLOTTER/SOUNDER COMBO - Garmin Navionics+ Australia & New Zealand Mapping preloaded, Bright sunlight-readable 9" keyed display, High-contrast vivid colour palettes, Traditional CHIRP and ClearVü scanning sonars, Garmin GT56

transducer fitted

- 

BIMINI AND ENVELOPE - Provides shade and shelter, can be folded together and safely covered/protected with the envelope

- 

MARINE BATTERY & ISOLATION SWITCH - Australian made marine rated battery with warranty

- 

CARGO/LUGGAGE NETTING FITTED UNDER COCKPIT

- 

COCKPIT LIGHTS UPGRADE

- 

12-MONTHS QLD REGISTRATION FOR BOAT AND TRAILER

- 

FULL IN-SHORE SAFETY GEAR - 70L Water, proof bag, 4x PFD(type 1) life jackets, LED torch, V-Sheet, Signal Mirror, 2x Telescopic Paddles, Anchor Kit with Rope & Chain, Inshore Flares(2x red, 2x orange)

SPECIFICATIONS

Hull Length:4.78m

Beam:2.14

Max. HP:75hp

Number of People:5

Fuel Tank:Under Floor 55L

Boat Weight:450kg

Motor Weight:166kg

Transom Shaft Length:LS

Top Sides:3mm

Bottom Sides:3mm

Transom Material:3mmFEATURES

Battery Box

Glove Box

Pole Mount Insert

Rear Ladder

Anchorwell

Cleat On Front Deck

Fully Weld Gunnels & Side Decks

Lean Through Dash

Side Decks Extruded

Side Pockets

Transducer Brackets x 2

Painted Hull

Rails

Windscreen

Seat Slider

Seats: Angler Sport

Seats: Rear Lounge and Backrest

Mechanical Tilt SteeringOPTIONS

Covers: Bimini & Envelope

Covers: Bimini & Envelope NT

Covers: Storm Cover

Front Clears

Side Clears

Travel Cover

Burley Bucket

Cargo/Luggage Netting

Cockpit Lights (2)

Cutting Board for Ski Pole

Drum Winch

Live Bait Tank Back Deck

Marine Radio

Rod Holders (2)

Ski Hooks

Ski Pole

Sound System & Speakers

Transom Pads

Quintrex Fishabout Captain's Bundle

Quintrex Fishabout Comfort Bundle

Quintrex Fishabout Fishing Bundle

Painted Two Tone

Windscreen Grab Handle

Deluxe Folding Rear Lounge & Backrest

Seats: Fish Sport

Seats: Maritime Sport

Side Combing Cushions

Helm: Hydraulic Steering

Helm: Hydraulic Tilt Steering

Vinyl Wrap

Please note that some of the images may include options that are not included in this package. Please refer to the package listings. Additionally we do not stock all packages that are advertised on line, these packages are to give you an idea of price and inclusions. Please allow us the opportunity to quote you on your requirements.

We sell the full range of: Quintrex, Yellowfin Plate boats, Haines Hunter, Evolution Boats, Polycraft, Yamaha Outboards, MOVE boat trailers, and much more. We can assist with Finance & Insurance to approved applicants. Looking to trade-in or sell your boat? Speak with one of our boat valuation experts!

BRISBANE YAMAHA - (07) 3888 1727, Bruce Highway, Burpengary QLD

Boat Brand	Model	Stock Number
Quintrex	450 FISHABOUT	Q450FAP2-0324
Length	Year	Condition

Disclaimer  
Our company offers the details of this vessel in good faith but cannot guarantee or warrant the accuracy of this information nor warrant the condition of the vessel. A buyer should instruct his agents and/or surveyors to investigate such details buyer desires validated. This vessel is offered subject to prior sale, price change or withdrawal without notice.

4.78 Metres	2024	New
State	Suburb	Boat Link
Queensland	Burpengary East	