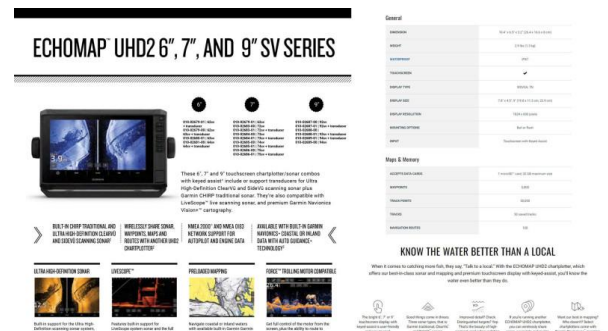




\$49,790



CATCH AND RELEASE BRACKET - Easy drive-on single-person boat hookup at the boat ramp

Disclaimer
Our company offers the details of this vessel in good faith but cannot guarantee or warrant the accuracy of this information nor warrant the condition of the vessel. A buyer should instruct his agents and/or surveyors to investigate such details buyer desires validated. This vessel is offered subject to prior sale, price change or withdrawal without notice.

-

YAMAHA F70HP 4-STROKE - Forward Control with 703 Control Box, 2x Multifunctional Digital Gauges, Power Trim & Tilt, Electric Start, Alloy Prop, Fuel Filter, Workshop fitted & Tested, Bolted on with PVC backing board, Loom & Control Cables, Dealer Delivery & Training

-

MOTOR SUPPORT BLOCK - Prevents the motor from returning to the vertical position and helps prevents excessive loads on the tilt assembly

-

GARMIN UHD2 75SV CHARTPLOTTER/SOUNDER COMBO - Garmin Navionics+ Australia & New Zealand Mapping preloaded, Bright sunlight-readable 9" keyed display, High-contrast vivid colour palettes, Traditional CHIRP and ClearVü scanning sonars, Garmin GT56 transducer fitted

-

FUSION RA70N SOUND SYSTEM + 2X SPEAKERS - Increased screen visibility, Built-in Class-AB amplifier for efficiency and reduced distortion, Compatible with your smart device via the Fusion-Link App, Quality marine grade sound system and speakers

-

BIMINI AND ENVELOPE WITH FRONT & SIDE CLEARS - Provides shade and shelter, can be folded together and safely covered/protected with the envelope. The front & side clears provide decent protection from the elements without compromising on vision or adding to the overall weight of the boat.

-

MARINE BATTERY & ISOLATION SWITCH - Australian made marine rated battery with warranty

-

BAITMATE BAIT BOARD

-

CARGO/LUGGAGE NETTING FITTED UNDER COCKPIT

-

WINDSCREEN GRAB RAIL UPGRADE

-

SKI HOOKS

-

12-MONTHS QLD REGISTRATION FOR BOAT AND TRAILER

-

FULL IN-SHORE SAFETY GEAR - 70L Water, proof bag, 4x PFD(type 1) life jackets, LED torch, V-Sheet, Signal Mirror, 2x Telescopic Paddles, Anchor Kit with Rope & Chain, Inshore Flares(2x red, 2x orange)

SPECIFICATIONS

Hull Length:4.78m

Beam:2.14

Max. HP:75hp

Number of People:5

Fuel Tank:Under Floor 55L

Boat Weight:488kg

Motor Weight:166kg

Transom Shaft Length:LS

Top Sides:3mm

Bottom Sides:3mm

Transom Material:3mmFEATURES

Covers: Bimini & Envelope

Battery Box

Burley Bucket

Cockpit Lights (2)

Cutting Board for Ski Pole

Glove Box

Marine Radio

Pole Mount Insert

Rear Ladder

Ski Pole

Transom Pads

Anchorwell

Cleat On Front Deck

Fully Weld Gunnels & Side Decks

Lean Through Dash

Side Decks Extruded

Side Pockets

Transducer Brackets x 2

Painted Hull

Rails

Windscreen

Deluxe Folding Rear Lounge & Backrest

Seat Slider

Seats: Maritime Sport

Hydraulic Tilt Steering Fishabout ProOPTIONS

Covers: Bimini & Envelope NT

Covers: Storm Cover

Front Clears

Side Clears

Travel Cover

Cargo/Luggage Netting

Drum Winch

Live Bait Tank Back Deck

Rod Holders (2)

Ski Hooks

Sound System & Speakers

Painted Two Tone

Windscreen Grab Handle

Side Combing Cushions

Vinyl Wrap

Please note that some of the images may include options that are not included in this package. Please refer to the package listings. Additionally we do not stock all packages that are advertised on line, these packages are to give you an idea of price and inclusions. Please allow us the opportunity to quote you on your requirements.

We sell the full range of: Quintrex, Yellowfin Plate boats, Haines Hunter, Evolution Boats, Polycraft, Yamaha Outboards, MOVE boat trailers, and much more. We can assist with Finance & Insurance to approved applicants. Looking to trade-in or sell your boat? Speak with one of our boat valuation experts!

BRISBANE YAMAHA - (07) 3888 1727, Bruce Highway, Burpengary QLD

Boat Brand	Model	Stock Number
Quintrex	450 Fishabout Pro	Q450FAPPRO-0324
Length	Year	Condition
4.78 Metres	2024	New
State	Suburb	Boat Link
Queensland	Burpengary East	